

Navigeren naar Duurzame Innovatie: Het Netwerk voor “The Infinite Enterprise” van de Toekomst

Patrick Groot Nuelend

Head of Vertical Markets & Strategy EMEA

Retail – Healthcare - Hospitality

Wentzo
Connect '23

Smart Networking &
Sustainability

 Extreme
networks



WHAT WE DO

**We make the
network a
strategic asset.**



To get started: From whom is this Quote?



“It is not the strongest of the species that survives nor the most intelligent, but the one most responsive to changes”

Change Presents CIOs with a Myriad of Challenges



Business



**Talent
Management**



**Hybrid
Work**

Technology



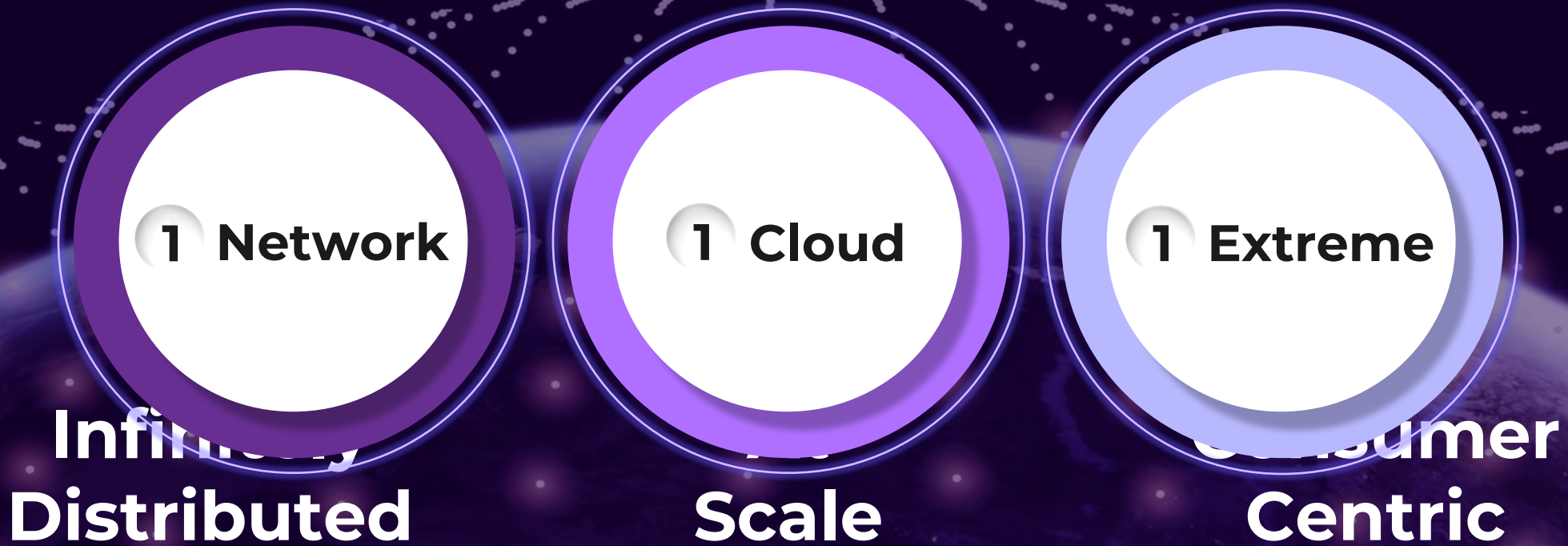
**Increasing
Network Complexity**



**Lack of IT Skills
Visibility**



Reduce Costs



But there is also ongoing change in The Infinite Enterprise





So: How **COULD**
the network of an
Infinite Enterprise
look like
tomorrow?



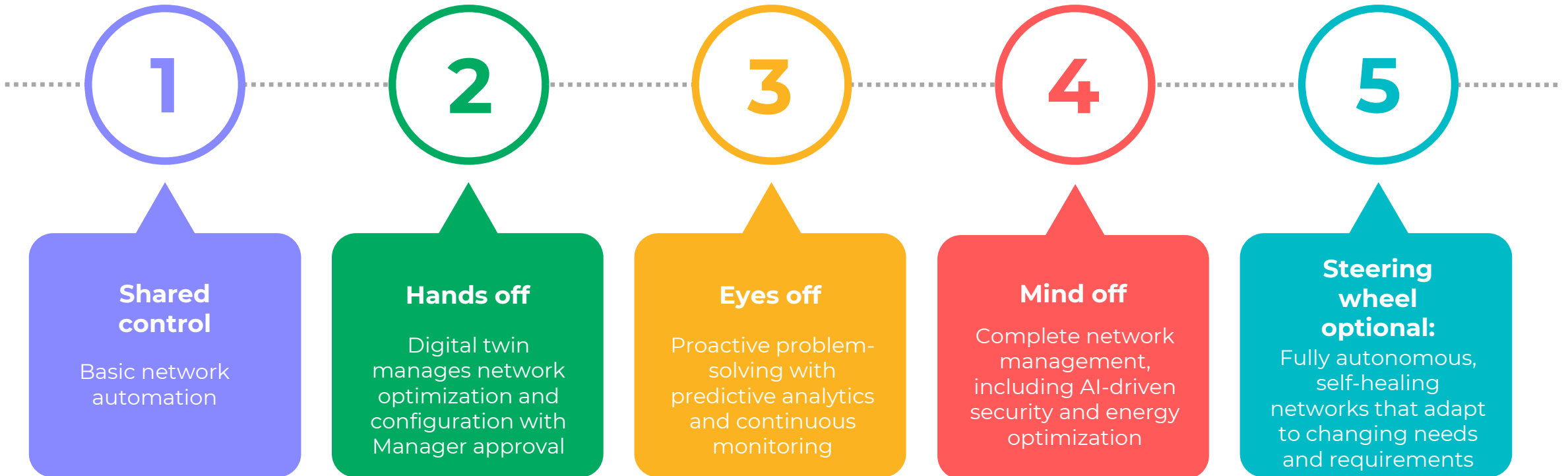
Managing networks based on business KPI optimization will be the favored approach for setting network policies.



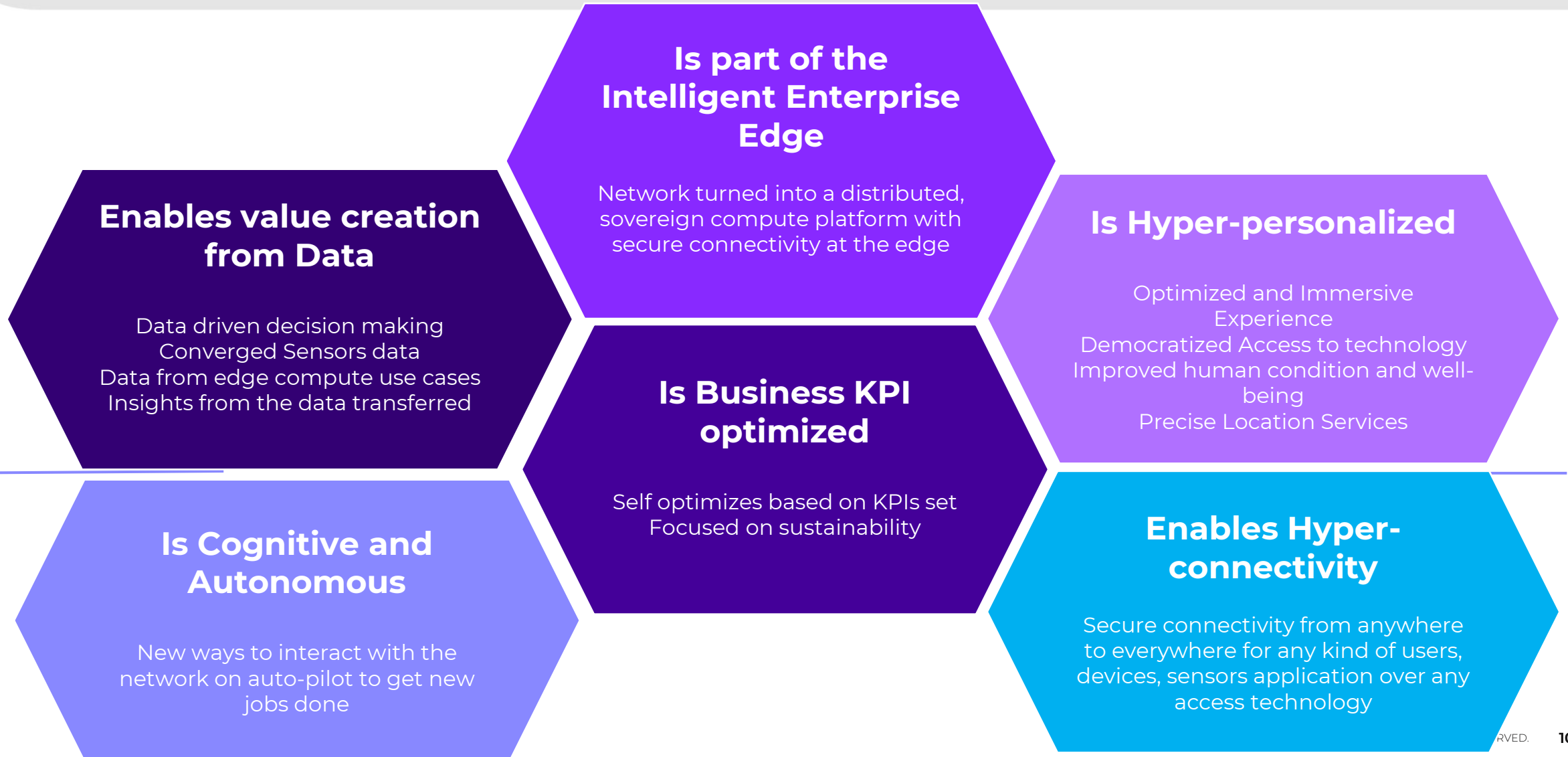
Networks will become fully self-sufficient, requiring no human intervention by year ____



2023



Putting it all together – The network in the future



Examples of The Infinite Enterprise



25 YEARS AGO

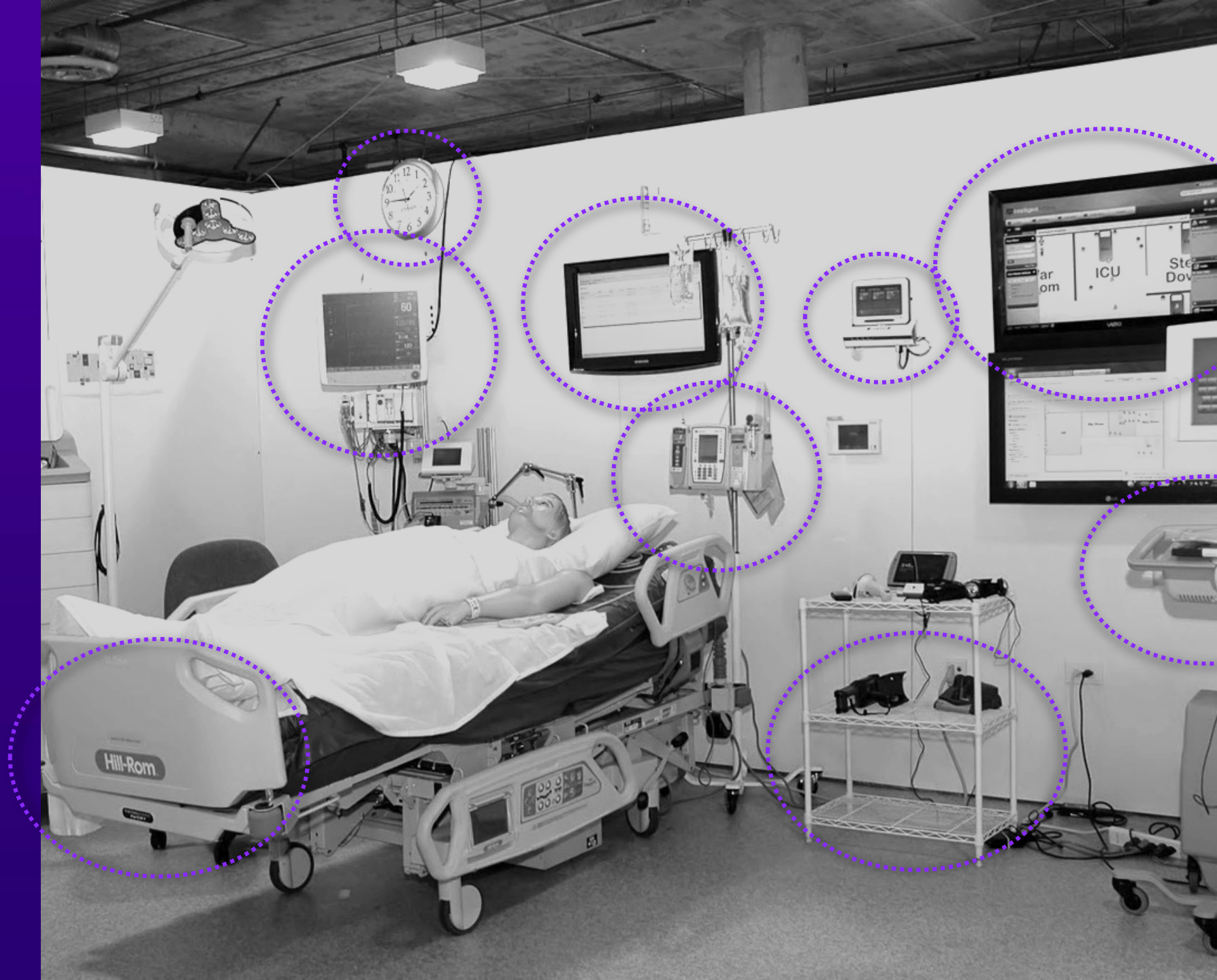
- Limited IP Network Connectivity
- Mainframes & AS400s
- Isolated Phone Systems
- Isolated TV Systems
- No Connected Medical Devices
- Standalone Nursecall
- Paper Orders, Labs, and Records





TODAY

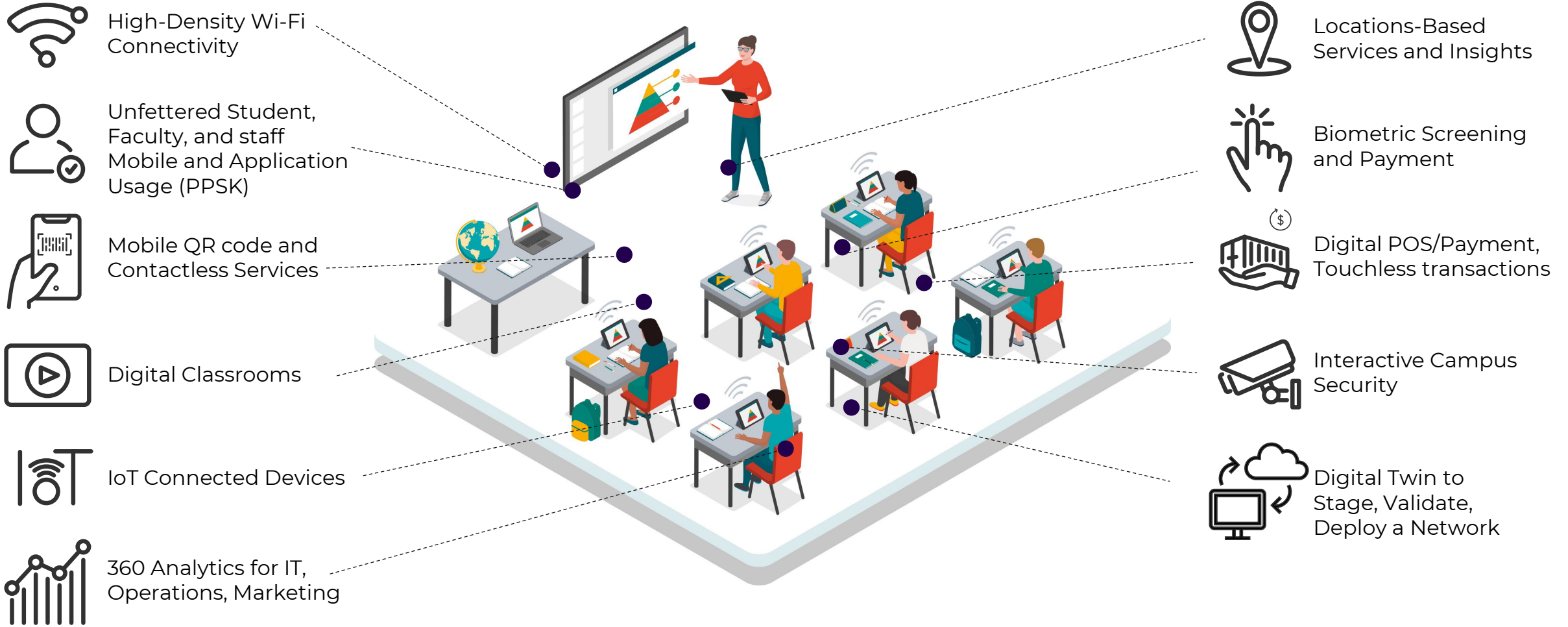
- Patient Entertainment Services
- Nurse Call
- Guest Wi-Fi
- Smart Beds
- Infusion Pumps
- Telemetry Systems
- Location Services
- Building Controls
- PoE Lighting



SMART HEALTHCARE



SMART EDUCATION





Innovative Showcase

Sustainability Focus

Educational Center

Futuristic Environment

Corporate Collaboration

Living Tomorrow and Extreme Networks – why we become partners?



Exponential Exposure

Unlock substantial exposure: Boost brand visibility, engage with a wider audience, and pave the way for market expansion.

Innovation Collaboration

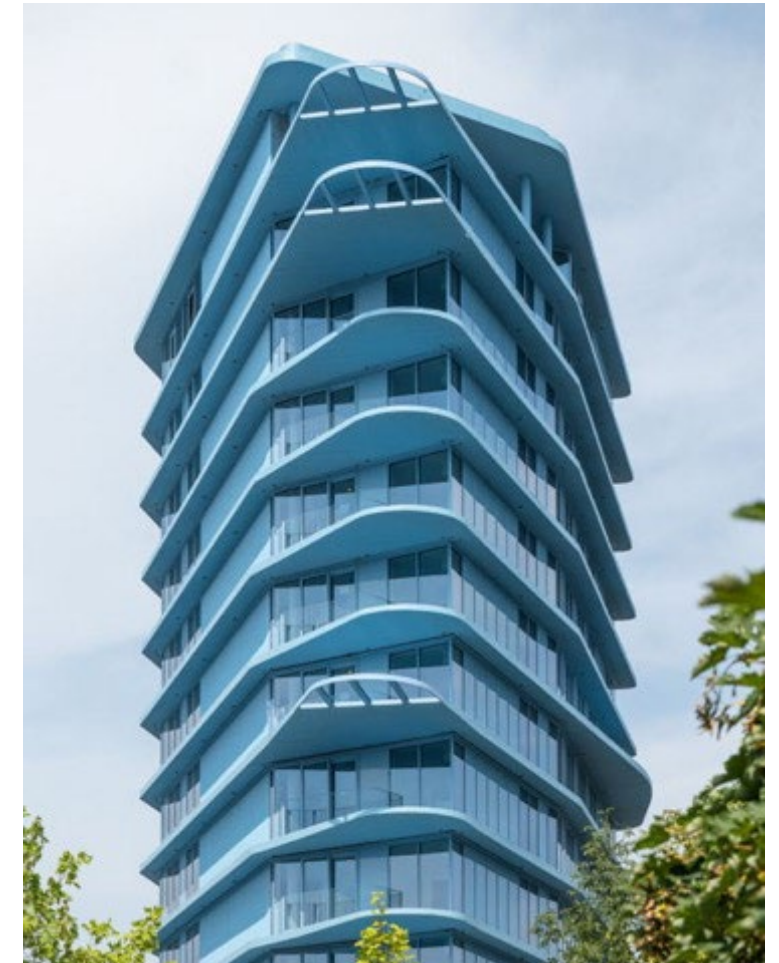
Cultivate innovation through collaboration: Engage actively with a diverse network of experts and businesses, opening doors to joint ventures and accelerated development.

Validation and Refinement

Validate and refine with precision: Utilize Living Tomorrow Brussels as a practical testing ground, perfecting your products and concepts based on invaluable real-world feedback and market insights.

Strategic Networking

Strategically network for growth: Establish vital connections with potential clients, investors, and collaborators during events, fostering opportunities for business growth, investment, and market diversification.



Living Tomorrow – NEW DIGITAL EXPERIENCE

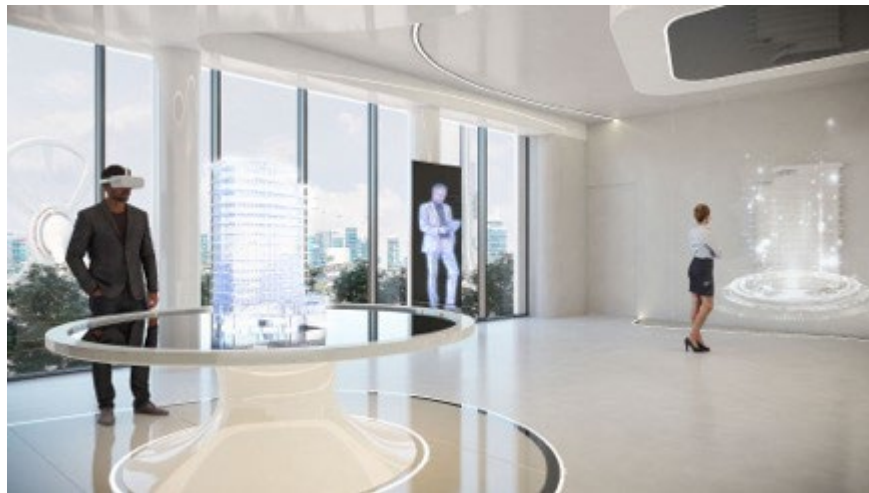


// DIGITAL EXPERIENCE CENTER

- Zone 1 – Experience 2030+
- Zone 2 – City 2030+
- Zone 3 – Autonomous 2030+
- Zone 4 – Home 2030+
- Zone 5 – Health 2030+
- Zone 6 – Work 2030+



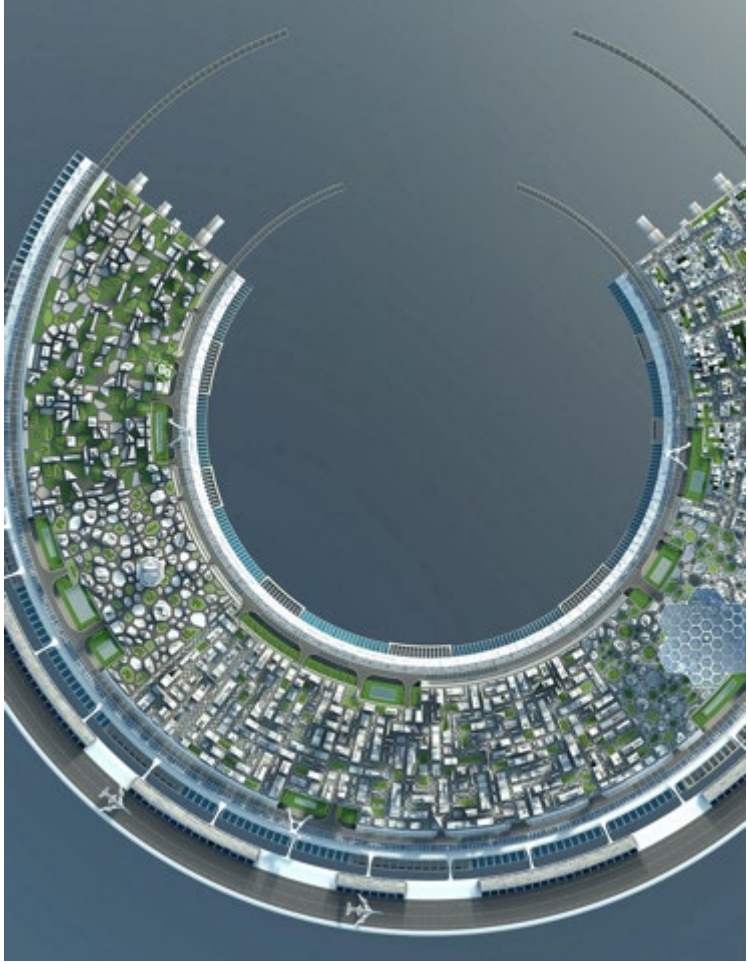
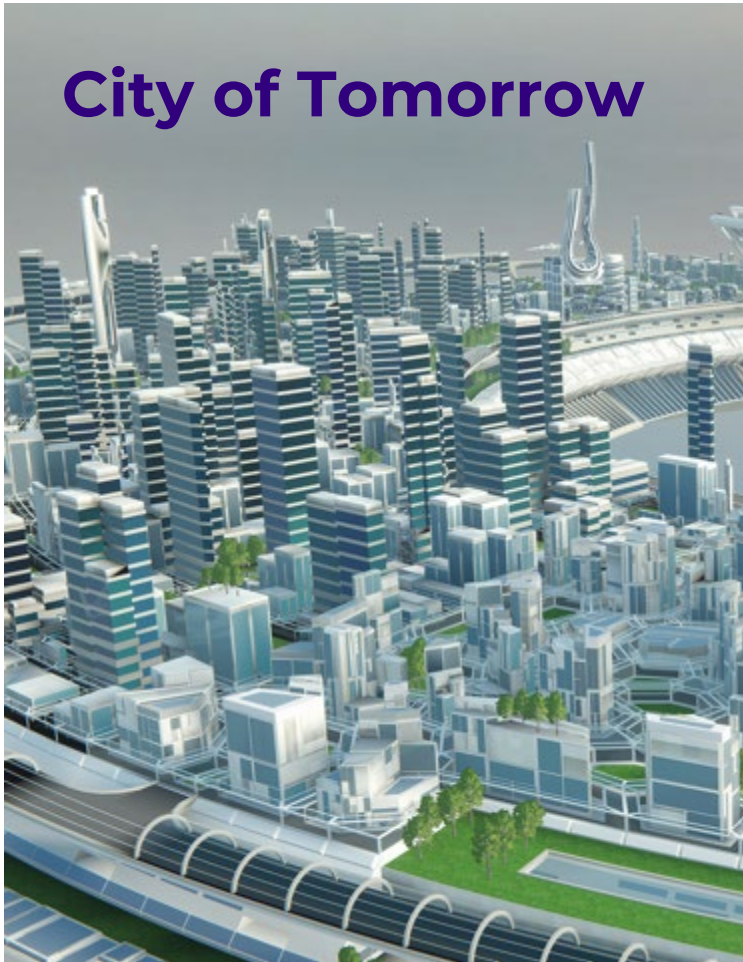
Living Tomorrow – Extreme Demo Experience



Living Tomorrow – Extreme Demo Experience (phase 1)



“WE CANNOT PREDICT THE FUTURE, BUT WE INVENT IT”



Wentzo / Extreme Trip to Living Tomorrow



Partners Find a Partner Contact Us Login EN

Extreme Networks
Products & Solutions Services Support & Training About Extreme Ready to Buy

Extreme Networks / About Extreme Networks / Company / Living Tomorrow Project

Living Tomorrow

Schedule a Tour

Extreme and Living Tomorrow: Inventing the Future

A New Partnership to Showcase How Networks Will Help Change the World

A Vision for Tomorrow Living Tomorrow showcases the technologies of the future at one incredible venue	The Connected Future In a world where everything is smart, connectivity is more important than ever before	A Unique Experience Join us on-site at Living Tomorrow to get a glimpse of the connected future
--	--	---

Download Brochure



<https://www.extremenetworks.com/about-extreme-networks/company/living-tomorrow-project>



ADVANCE
WITH US™